

LXLC-(50-100)A

Removable Horizontal Woltman Water Meter

Type: Dry dial , Detachable , Horizontal**Standard:** ISO4064(R50/R63/R80/R100)**Size:** DN50~DN100**Working condition:**

Temperature:

Cold water:0°C~40°C

Hot water :40°C~90°C

Water Pressure:

1.0Mpa (1.6Mpa on request)

● FUNCTION:

Measuring the volume of cold or hot water passing through the pipeline.

● FEATURE:

Large flow capacity and small pressure lose.

High quality material applied to guarantee its function efficient and reliable.

Magnet-drive, dry dial, protected by the steel cover, forever clean and legible dial for reading.

Register may be rotated through 360°

Removable mechanism is easy to replace or fix and not required detaching the body from the pipeline.

Pulse emitter can be installed to this type for remote reading(option).

● MAXIMUM PERMISSIBLE ERROR:a) In the lower zone , $Q_1 \leq Q \leq Q_2$ is $\pm 5\%$ b) In the upper zone , $Q_2 \leq Q \leq Q_4$ is $\pm 2\%$ **● Technical parameters**

Type	Size		Class of measurement		Commonly used flow (Q3)m ³ /h	Min reading	Max reading	Length	Width	Height	Connecting flange			Weight(kg)	
			Q3/Q1	Q2/Q1							Outside diameter	Bolt circle diameter	Connecting bolts	Net	Gross
LXLC-50(S)	50MM	2"	R50、R63	4、6.3	25	0.001	9999999	200	175	230	165	125	4-M16	11	12
LXLC-65(S)	65MM	2 1/2"	R80、R100		40	0.001	9999999	200	185	230	185	145	4-M16	12.5	13.5

LXLC-(50-300)

Removable Horizontal Woltman Water Meter

Type: Dry dial, Detachable, Horizontal

Standard: ISO4064(R50/R63/80/R100)

Size: DN50~DN300

Working condition:

Temperature:

Cold water: 0°C~40°C

Hot water: 40°C~90°C

Water Pressure:

1.0Mpa (1.6Mpa on request)

● FUNCTION:

Measuring the volume of cold or hot water passing through the pipeline.

● FEATURE:

Large flow capacity and small pressure lose.

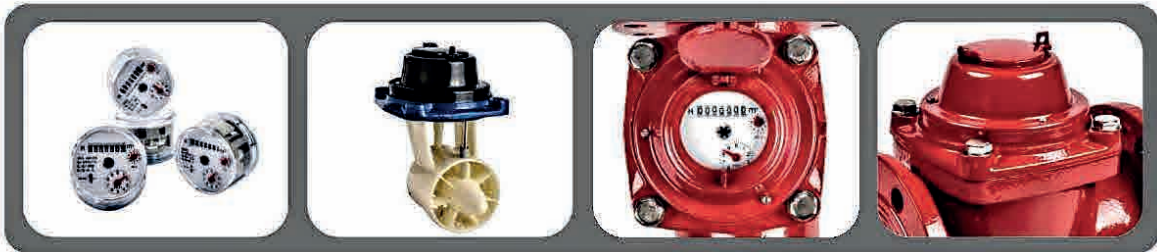
High quality material applied to guarantee its function efficient and reliable.

Magnet-drive, dry dial, protected by the steel cover, forever clean and legible dial for reading.

Register may be rotated through 360°.

Removable mechanism is easy to replace or fix and not required detaching the body from the pipeline.

Pulse emitter can be installed to this type for remote reading(option).

● MAXIMUM PERMISSIBLE ERROR:a) In the lower zone, $Q_1 \leq Q \leq Q_2$ is $\pm 5\%$ b) In the upper zone, $Q_2 \leq Q \leq Q_4$ is $\pm 2\%$;**● Technical parameters**

Type	Size		Class of measurement		Commonly used flow (Q3)m ³ /h	Min reading m ³	Max reading	Length	Width	Height	Connecting flange			Weight(kg)			
			Q3/Q1	Q2/Q1							Outside diameter	Bolt circle diameter	Connecting bolts	Net	Gross		
LXLC-50	50MM	2"	R50、R63	1.6、25	25	0.001	9,999,999	200	185	250	165	125	4-M16	12.5	13.5		
LXLC-65	65MM	2 1/2"			40	0.001	9,999,999	200	185	250	185	145	4-M16	13.5	14.5		
LXLC-80	80MM	3"			63	0.001	9,999,999	225	200	255	200	160	8-M16	13.8	14.8		
LXLC-100	100MM	4"			100	0.001	9,999,999	250	215	265	220	180	8-M16	16.2	17.5		
LXLC-125	125MM	5"			R80、R100	4、63	160	0.01	99,999,999	250	250	290	250	210	8-M16	19	20.5
LXLC-150	150MM	6"					250	0.01	99,999,999	300	285	310	280	240	8-M20	24.5	26.5
LXLC-200	200MM	8"					400	0.01	99,999,999	350	340	350	340	295	8-M20	37	39
LXLC-250	250MM	10"					630	0.01	99,999,999	400	400	430	395	350	12-M20	65	70
LXLC-300	300MM	12"	1000	0.01			99,999,999	450	450	460	445	400	12-M20	85	93		